

Anti-CKMT2 Antibody
Rabbit polyclonal antibody to CKMT2
Catalog # AP59987**Specification**

Anti-CKMT2 Antibody - Product Information

| | |
|-------------------|--|
| Application | WB, IF/IC, IHC |
| Primary Accession | P17540 |
| Other Accession | Q6P8J7 |
| Reactivity | Human, Mouse, Rat, Pig, Chicken, Bovine, Dog |
| Host | Rabbit |
| Clonality | Polyclonal |
| Calculated MW | 47504 |

Anti-CKMT2 Antibody - Additional Information**Gene ID** 1160**Other Names**

Creatine kinase S-type mitochondrial; Basic-type mitochondrial creatine kinase; Mib-CK; Sarcomeric mitochondrial creatine kinase; S-MtCK

Target/Specificity

Recognizes endogenous levels of CKMT2 protein.

Dilution

WB~~WB (1/500 - 1/1000), IH (1/100 - 1/200), IF/IC (1/100 - 1/500)

IF/IC~~N/A

IHC~~1:100~500

Format

Liquid in 0.42% Potassium phosphate, 0.87% Sodium chloride, pH 7.3, 30% glycerol, and 0.09% (W/V) sodium azide.

Storage

Store at -20 °C. Stable for 12 months from date of receipt

Anti-CKMT2 Antibody - Protein Information**Name** CKMT2**Function**

Reversibly catalyzes the transfer of phosphate between ATP and various phosphogens (e.g. creatine phosphate). Creatine kinase isoenzymes play a central role in energy transduction in tissues with large, fluctuating energy demands, such as skeletal muscle, heart, brain and spermatozoa.

Cellular Location

Mitochondrion inner membrane; Peripheral membrane protein; Intermembrane side

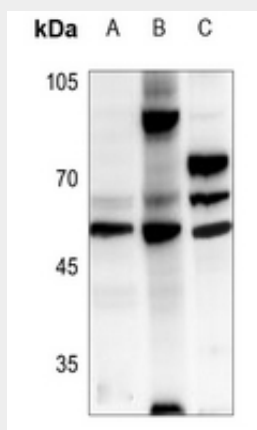
Tissue Location

Sarcomere-specific. Found only in heart and skeletal muscles

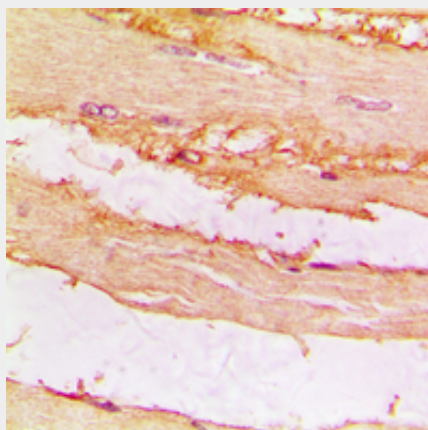
Anti-CKMT2 Antibody - Protocols

Provided below are standard protocols that you may find useful for product applications.

- [Western Blot](#)
- [Blocking Peptides](#)
- [Dot Blot](#)
- [Immunohistochemistry](#)
- [Immunofluorescence](#)
- [Immunoprecipitation](#)
- [Flow Cytometry](#)
- [Cell Culture](#)

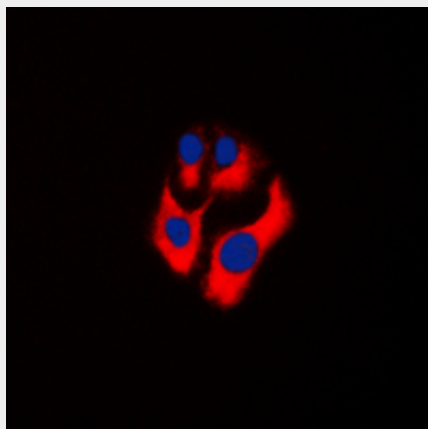
Anti-CKMT2 Antibody - Images

Western blot analysis of CKMT2 expression in mouse heart (A), rat kidney (B), rat heart (C) whole cell lysates.



Immunohistochemical analysis of CKMT2 staining in human muscle formalin fixed paraffin embedded tissue section. The section was pre-treated using heat mediated antigen retrieval with

sodium citrate buffer (pH 6.0). The section was then incubated with the antibody at room temperature and detected using an HRP conjugated compact polymer system. DAB was used as the chromogen. The section was then counterstained with haematoxylin and mounted with DPX.



Immunofluorescent analysis of CKMT2 staining in THP1 cells. Formalin-fixed cells were permeabilized with 0.1% Triton X-100 in TBS for 5-10 minutes and blocked with 3% BSA-PBS for 30 minutes at room temperature. Cells were probed with the primary antibody in 3% BSA-PBS and incubated overnight at 4 °C in a humidified chamber. Cells were washed with PBST and incubated with a DyLight 594-conjugated secondary antibody (red) in PBS at room temperature in the dark. DAPI was used to stain the cell nuclei (blue).

Anti-CKMT2 Antibody - Background

KLH-conjugated synthetic peptide encompassing a sequence within the center region of human CKMT2. The exact sequence is proprietary.